

# Splitting or Cutting Blocks



## Splitting a block

To split a block from the AB Courtyard Collection, you can use a hammer and chisel or a skill saw.

Locate the blocks with the premarked splitting notches. Using a hammer and chisel, score around the blocks along the splitting notch, then break the blocks with a few sharp blows. This should yield a nice split.

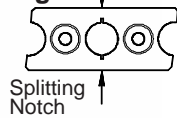
The split side creates a flush or straight edge when building panels with posts, corners or transitioning curves in the wall.



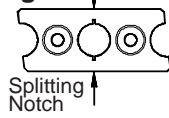
The AB Dublin and AB York blocks come with pre-marked splitting notches. Two out of three AB Dublin blocks comes with a center-split notch and one out of three come with an end-split notch. One out of Six York blocks have a center-split notch. See below.

**SAFETY FIRST**  
Always wear safety glasses when splitting or cutting block. A dust mask is recommended when cutting block.

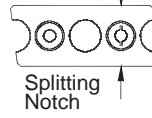
### AB Dublin center-split with a right angle



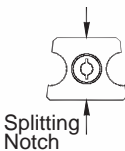
### AB Dublin center-split with a left angle



### AB Dublin end-split with a left angle



### AB York center-split



# Splitting or Cutting Blocks

## Splitting a Wall Cap block

Use the following 3 easy steps to split your Wall Cap.

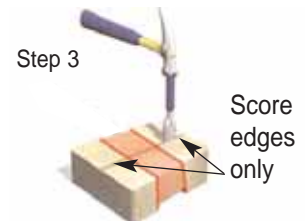
**Step 1:** Score the top and bottom of the block with a skill saw and masonry blade.



**Step 2:** Using a hammer and chisel, score the bottom of the block in notched area.



**Step 3:** Score the top with a chisel on the **outer edges only**. Strike harder blows in the scored area to split the block.



Do not score over the notch as the block will split the wrong way.

### SAFETY FIRST

Always wear safety glasses when splitting or cutting block. A dust mask is recommended when cutting block.

## Options for cutting a block with a saw

First determine where the block will need to be split.

- Use a skill saw with a masonry blade to score around the entire block and then with a hammer and chisel score around the block until it breaks. This should yield a nice split. *Shown at right.*  
or
- Use a masonry saw with a dry cutting diamond blade. This method makes a complete cut and eliminates the need for a hammer and chisel.  
or
- Use a metal chop saw with a dry cutting diamond blade to cut the block.

**NOTE:** Masonry saws and metal chop saws are available for rental at most retail centers.



allanblock.com

For a complete library of AB Courtyard Collection How-to sheets visit [allanblock.com](http://allanblock.com)